

NHS COVID-19 app

Fact sheet for parents,
carers and those who
are 16 and over



All of the information and images in this document are correct as of 16th August 2021.
For the latest information go to www.covid19.nhs.uk.

The app has 6 key features that support you:

Trace

This feature is contact tracing. It allows the app to detect and log other nearby app users using random unique IDs. No personal data is shared between your phone and anyone else's phone.

If any of those users later test positive for coronavirus (COVID-19), you will receive an exposure alert with advice on what to do. If you are under 18, you are advised to show this alert to a trusted adult.

Symptoms

This feature is a coronavirus symptom checker. If you feel unwell, you can use the app to check if your symptoms could be related to coronavirus. The app will give you a list of potential symptoms and you can then choose the ones that apply to you.

If your symptoms could be coronavirus, you will be advised to self-isolate and book a test.

Check-in

This feature is a check-in function. The app allows you to record when you visit a venue by "checking-in" when you arrive, using an official NHS QR code poster.

The app will provide you with a digital diary of places you have visited. You will receive a venue alert if you have checked in somewhere where there has been a coronavirus outbreak. This alert will encourage you to book a test, it will never ask you to self-isolate. You can edit your venue history at any time, and it stays on your phone unless you choose to share it.

Test

This feature will help you book a test. If you have coronavirus symptoms, the app will take you to a website where you can book a test to see if you have coronavirus or not. If you are under 18, you are advised to discuss with a trusted adult before booking a test. If you test positive for coronavirus, you will be sent an email or text with a code that you can enter into the app.

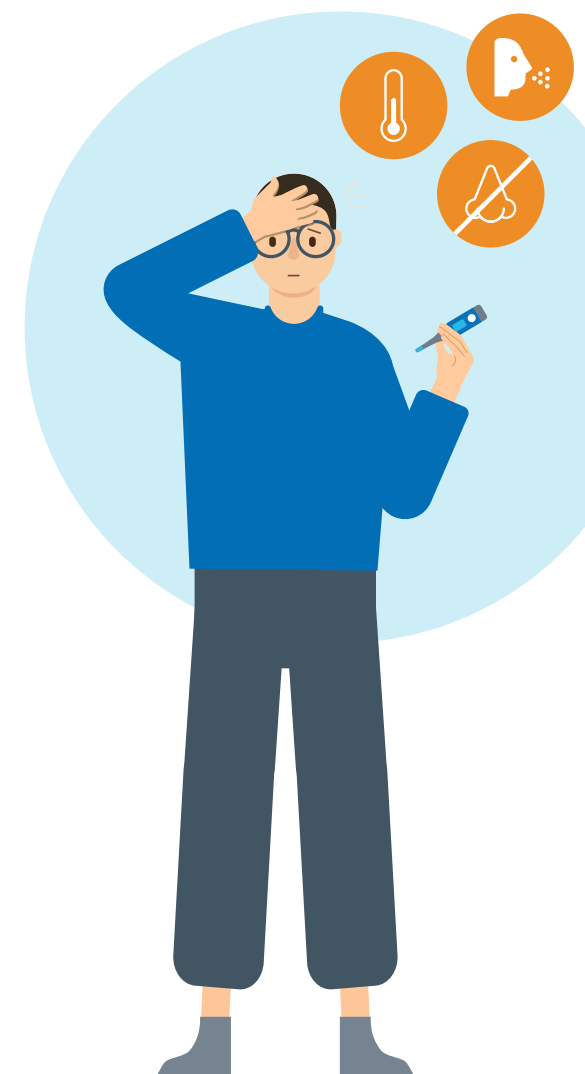
Area

This feature is for area-specific alerts. When you first register for the app you will be asked for the first half of your postcode, and your local authority. The app will provide you with information on coronavirus appropriate to your local area. If your area risk changes at any point, the app will notify you. This could help you make decisions to protect your loved ones.

Isolate

This feature is an isolation 'companion'. It counts down how many days you have left to isolate if you have been advised to do so. It also provides links to useful information. It will tell you when you have reached the end of your isolation period.

From August 2021 if you are under 18 or over 18 and fully vaccinated, you will no longer need to self-isolate if you have been identified as a close contact of someone with coronavirus.



NHS COVID-19 app fact sheet

The app

- The NHS COVID-19 app has launched nationally and is available to everyone aged 16 and over in England and Wales.
- The app will help the NHS understand where and how quickly the virus is spreading, so it can respond effectively.
- We want as many people as possible to download and use the app. Every person who does will be helping in the fight against coronavirus (COVID-19).
- Although those aged 16 and over can use the app in education settings, the main benefit is outside that, when they are socialising, using public transport or in a public space.

In education settings

- When in an education setting, a user may be advised to turn the contact tracing function off. This does not mean turning off app alerts, but instead turning off the app's ability to trace who a user has spent time near.
- By turning this function off it will, for example, ensure that phones near each other in lockers do not record contacts with each other when they are not with their owners.
- Users will be given the option to pause the contact tracing feature for different time periods so that app users can receive a reminder to turn contact tracing back on after that time.

Notifications

- If the app identifies a user has been in close contact with a confirmed case of coronavirus, the user will receive an exposure alert with advice on what to do
 1. They will be advised to get tested
 2. They may be advised to self isolate
- If a user who is 16-18 years old receives an alert, they should notify a trusted adult. When they are in an education setting, this trusted adult should be a member of staff who will then follow official guidelines.
- Parents or carers should inform the relevant educational setting if their child tests positive for coronavirus. They should do this whether or not their child is an app user.

Privacy

- The app will not hold any personal information. It cannot track a user's location. It cannot be used to access a user's identity or any other information on user's phone.
- Users can delete the NHS COVID-19 app at any time. This will also delete all data stored on app.





For more information please visit:
www.covid19.nhs.uk